

**DISTRICT 3 AREA SUMMARY**

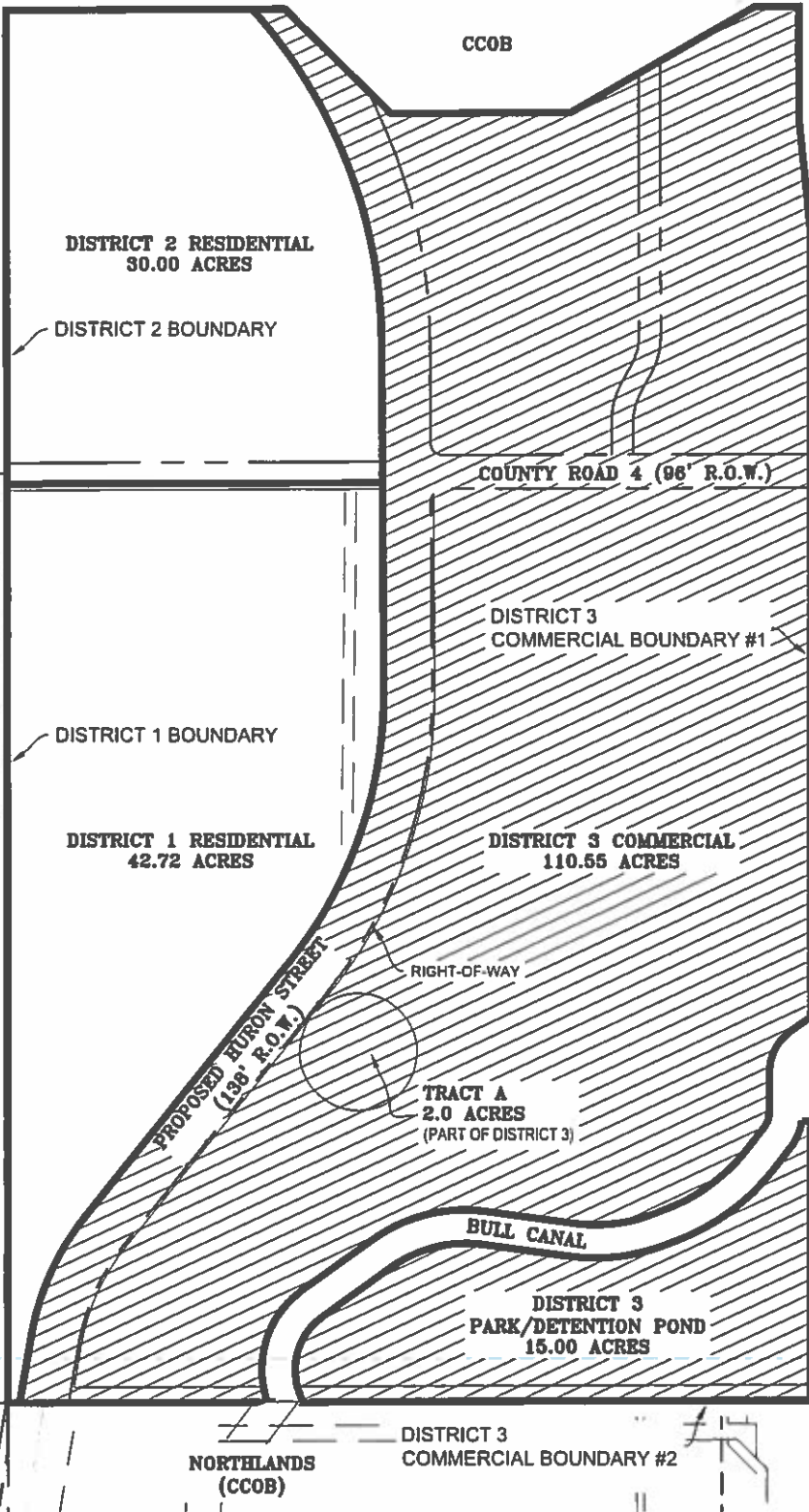
125.55 ACRES (TOTAL)  
110.55 ACRES (BOUNDARY #1)  
15.00 ACRES (BOUNDARY #2)

CCOB

**RECEIVED**

DEC 12 2017

Div of Local Government



RANCH EGG SUBDIVISION  
(WELD COUNTY)

LOWELL LANE

CCOB

NORTHLANDS  
(CCOB)

DISTRICT 3  
COMMERCIAL BOUNDARY #2

**NOTE:**

THE INFORMATION SHOWN ON THE METRO DISTRICT EXHIBITS IS CONCEPTUAL AND FOR ILLUSTRATION PURPOSES ONLY. THIS INFORMATION IS SUBJECT TO CHANGE THROUGHOUT THE APPROVAL PROCESS OF ALL APPLICABLE GOVERNING JURISDICTIONS.



1529 MARKET STREET  
SUITE 200  
DENVER, CO 80202  
(720) 250-8305

**PALISADE PARK NORTH MD No. 3  
COMMERCIAL BOUNDARY MAP**

DATE: 07/26/2017

SCALE: 1" = 500'

BY: JMM